

The “*Continuing Call to Action*”

and

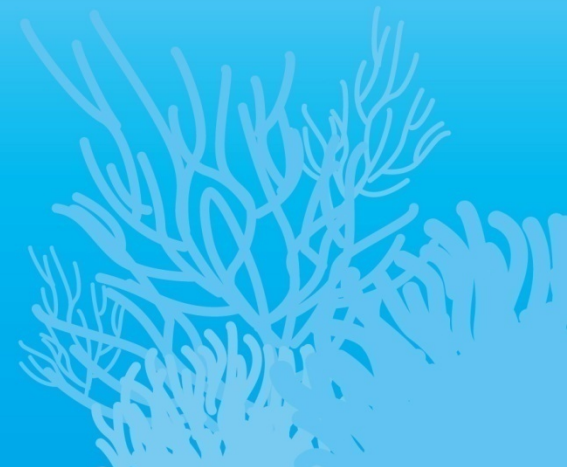
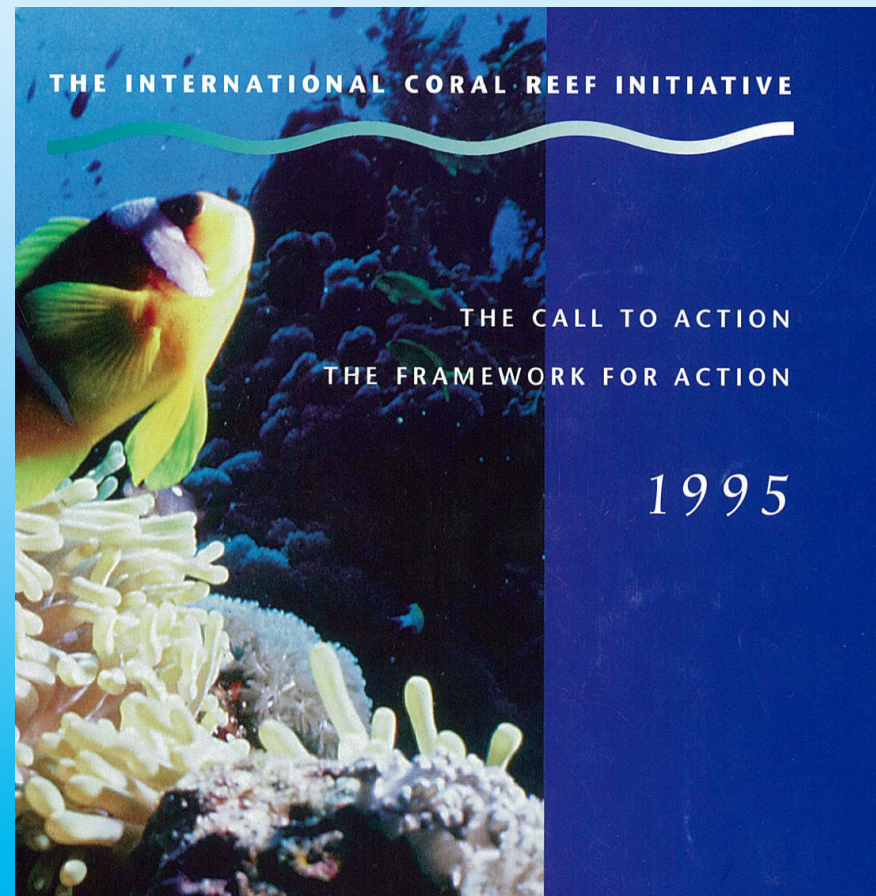
“*A Framework for Action 2013*”



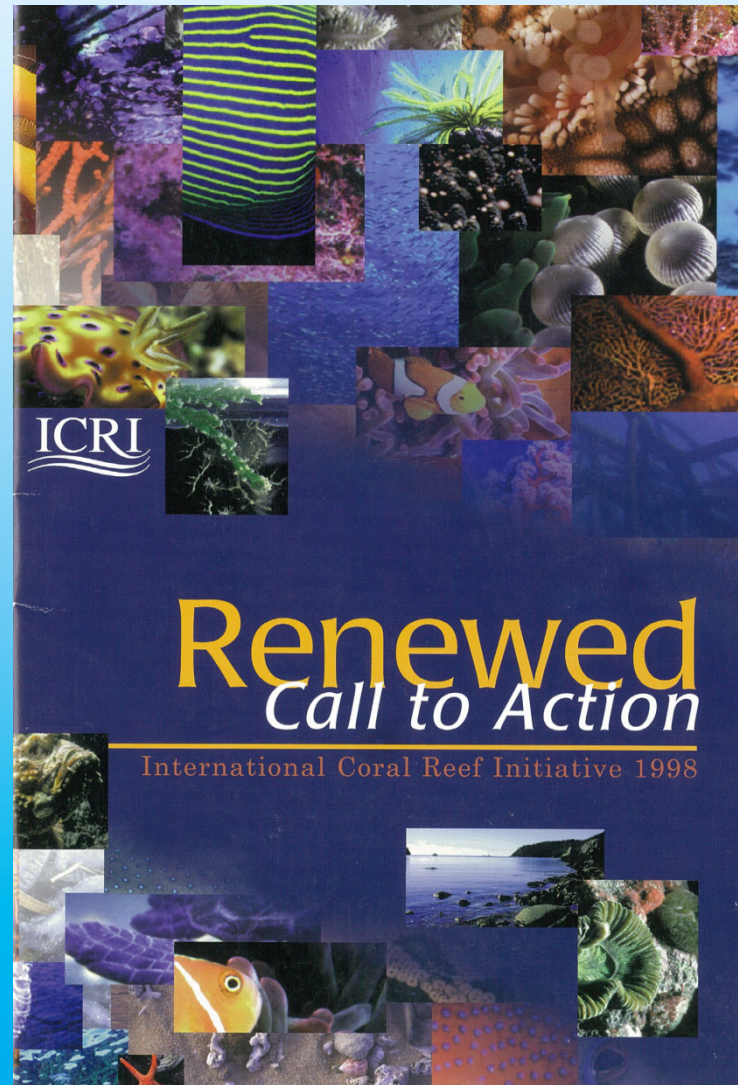
Australian Government

**Great Barrier Reef
Marine Park Authority**

As it was in the beginning



..... was reviewed in 1998



The 2013 review process

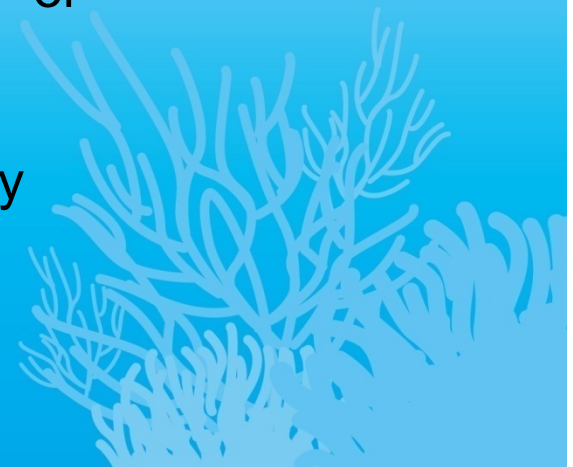
Survey of ICRI membership on what they wanted from a new document

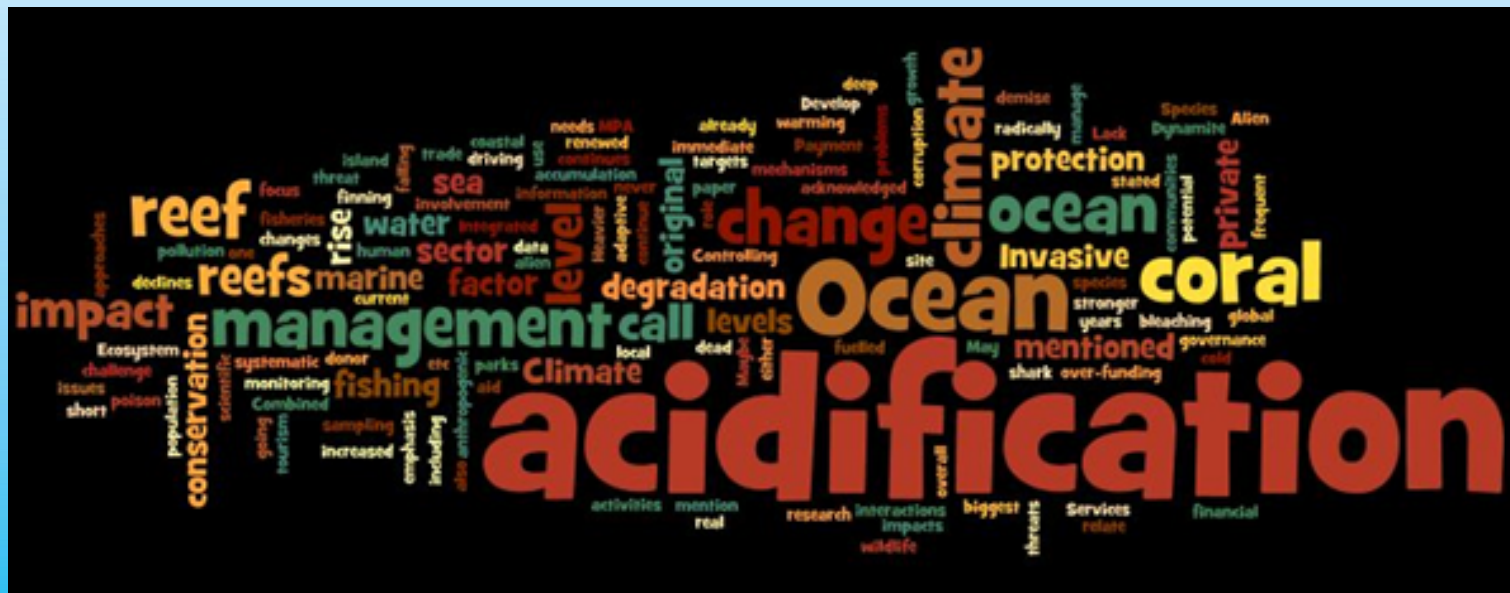
- 36 respondents a big “thank you”!

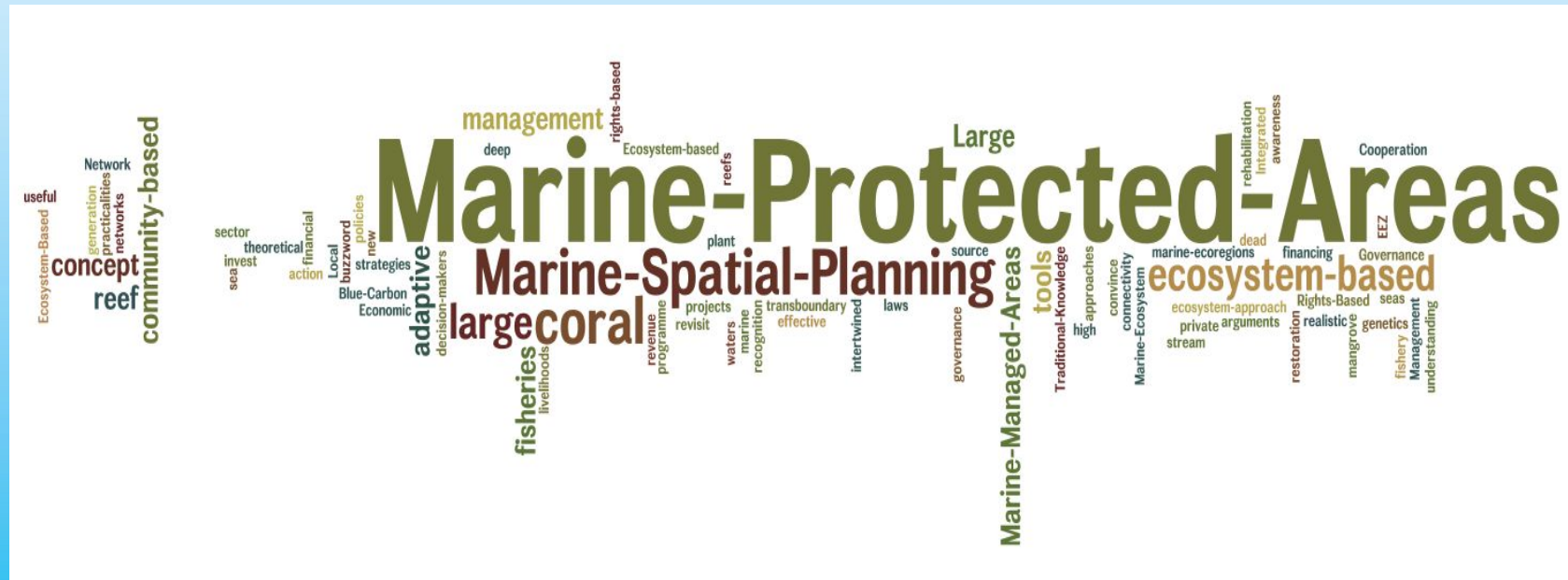


What did you want?

- Keep it simple, readable and relevant
- Plain English
- Refer to contemporary events as “guides” or “supports” for ICRI
- Update the “Challenges” and “Trends”
- Update the Framework for Action similarly

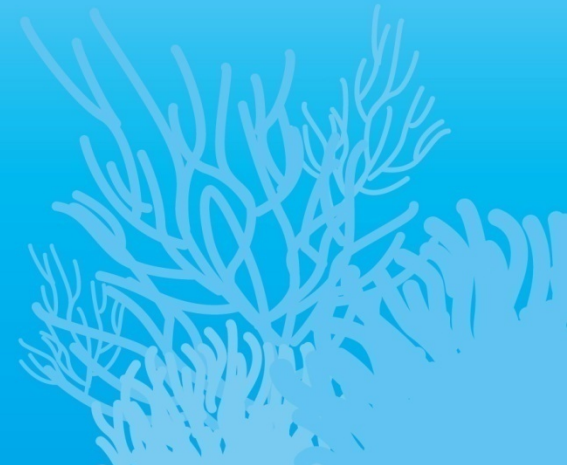






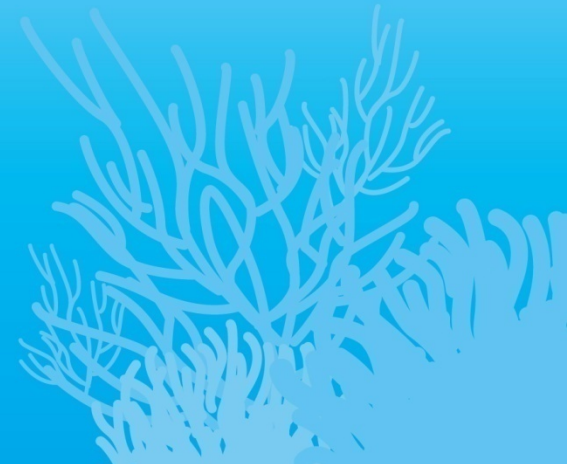
1st ICRI member comment period

- May 2013
- 7 responses
- Positive and very helpful



2nd ICRI member comment period

- August 2013
- 3 responses
- More positive and even more helpful!!!



The proposed product

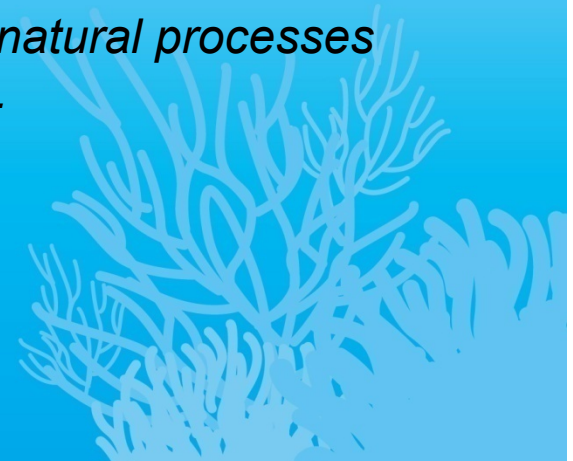


The “Continuing Call”

“The nations and organisations supporting the International Coral Reef Initiative (ICRI) acknowledge that in the nineteen years since its inception, ICRI has been the catalyst for a major improvement in the global awareness of the values of coral reefs and related ecosystems and the threats those systems face. In that time much progress has been made to understand and address those threats. Nevertheless, the plight of coral reefs continues to be a source of great concern. Coral reefs:

- continue to be degraded by a range of pressures; and*
- are now affected by a number of anthropogenic and natural processes not clearly understood at the time of ICRI’s inception.*

.....



The “*Continuing Call*”

*“..... Accordingly, ICRI members **CALL** upon all those with influence over the sustainable management of coral reefs and related ecosystems to continue efforts to:*

- manage coral reefs and related ecosystems in a manner that recognises the connectivity of land and sea and the cumulative impacts of anthropogenic pressures, and seeks to build resilience of natural systems to withstand the long term effects of a changing climate (**Integrated Management**);*
- build capacity in all facets of marine conservation and sustainable use, to disseminate and apply best practices and engage communities in the sustainable management of coral reefs and related ecosystems (**Capacity Building**);*
- support research including citizen science approaches to afford the widest possible ability for countries and communities to assess and report on the status, health and threats to their coral reefs in a coordinated, comparable and accessible manner (**Science and Monitoring**); and*
- review impact of actions taken, assess management effectiveness and apply adaptive responses. (**Review**).”*

The “*Framework for Action 2013*”

Our Vision

“Coral reefs and related ecosystems are used and managed in an ecologically sustainable manner to enhance their resilience and provide goods and services for generations to come.”



The “*Framework for Action 2013*”

PERIODIC ASSESSMENT (REVIEW)

For management to be effective, it needs to be regularly measured, assessed and adapted. Matters such as improved knowledge; the advent of new tools, technologies and management mechanisms; and changes in cultural, geo-political, economic and environmental contexts; call for regular revision and updating of existing management measures to adapt them to changing circumstances. This is the fourth cornerstone of ICRI, which reiterates the cyclic nature of management and the need for continual improvement at both strategic and operational levels through adaptive learning. This can also apply to a review of this framework to reflect current practices, trends in management practices and social and policy priorities.

Objective	To engage in periodic review of the impact and effectiveness of all elements of management to enable evaluation and refinement of management measures in an adaptive framework.
General Approach	Periodic assessments of management effectiveness and evaluation of projects and activities to ensure the efficacy of management tools and systems in tackling the range of pressures affecting coral reefs and related ecosystems and protecting the values associated with them.
Desired outcome	Management processes and activities are regularly reviewed and improved using a structured approach, to enhance their ability to effectively reduce pressures and threats.
Strategies and approaches	Implement regular assessments of management effectiveness of all approaches to managing coral reef and related ecosystems, including the assessment of all components of the management process.
	Engage all stakeholders, including indigenous and local communities, in relevant elements of management effectiveness assessment.
	Use the results of these assessments to adapt and improve future management action.

ICRI
Foundation
“Pillar”

Broad
Objective

Desired
outcome

Some potential actions to achieve the Objective
and thus to attain the Desired Outcome

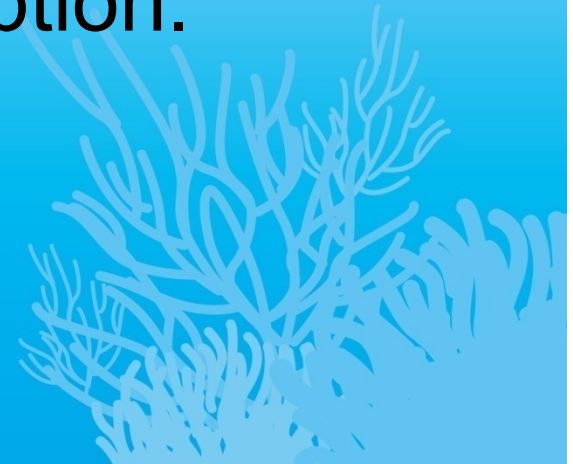
Context

Suggested
implementation
approach

The ICRI Secretariat commends:

- the “Continuing Call to Action”; and
- the “Framework for Action 2013”

to the ICRI community for adoption.





Thank you so much!

